



78th Air Base Wing



78TH AIR BASE WING



RAFB Mass Transit

23 November 2010

* All routes, stops, & schedules may change, be adjusted and/or modified to meet mission requirements and workforce demands

"Two Types of Class...First and None"



Mass Transportation & Actions We Have Taken



78TH AIR BASE WING

- Dedicated Gate for High Occupancy Vehicles (HOV)
 - Gate 12 – Extension of North Davis Drive

- Buses Into Robins Daily (BIRD)



- Macon Transit Authority (MTA) providing Mass Transit to RAFB

- Round Robins Express
 - RAFB Inter-base Shuttle Service



"Two Types of Class...First and None"



Dedicated High Occupancy (HOV) Gate (Gate 12)



78TH AIR BASE WING

- **Opens – Monday, 29 November 2010**
 - Entrance to RAFB only
- **Location – North Davis Drive Extension**
- **Vehicles, 3+ occupants**
 - All occupants must have proper/valid I.D to enter RAFB
 - Vehicles eligible to enter Gate 12 - POVs of 3+ occupants, Van Pools, and **BIRD** Shuttle
 - POVs with 3+ occupants may park in any authorized parking space on RAFB
 - All Commercial vehicles must still use Commercial Gate (Gate 4)
- **Operating hours – 0515-0915, Monday-Friday**
 - Except holidays and family days
 - Afternoon access/entrance through Gate 12 is not available at this time
- **Vehicles that do not meet the above criteria will be turned around**

"Two Types of Class...First and None"



Aerial View: North Davis Drive & Gate 12



78TH AIR BASE WING



"Two Types of Class...First and None"



78TH AIR BASE WING

Why should I ride Bird?

BIRD starts **Monday, 29 November 2010** - There are several reasons to participate.

First, You can save money. The cost for the trip between the base and Macon is only \$3.00 each way. This is about what you would spend for gas for the trip. Also, a bus ride saves wear and tear on your vehicle which might delay or eliminate repair bills. In addition, you can sign up for participation in either the Clean Air Campaign or the Transportation Incentive Program (TIP) and receive reimbursement for some or most of the cost.

Second, Riding the bus can reduce stress. Since you do not have to stay focused on the road, or deal with traffic congestion, you can relax without being frustrated by traffic difficulties .

Thirdly, you can accomplish other things during this time. You can think, read a book or the paper. This is also a safe way to travel and answer text messages on your phone.

Lastly, you are helping to reduce the parking congestion on Robins AFB as well as reducing traffic on the roads, pollution in the air and America's dependency on fossil fuels.



"Two Types of Class...First and None"



78TH AIR BASE WING

Want To Ride To Work For Free?

BIRD starts **Monday, 29 November 2010** - Park at Macon Centreplex and relax going to and from RAFB – There are 10 stops on RAFB for your convenience.

If you use the bus on an infrequent or random basis, you can sign up for the Clean Air Campaign and receive a partial reimburse of the cost of the bus ride. Robins partners with the Clean Air Campaign to give workers a way to find carpool partners that may have similar working hours through an online registry at www.logyourcommute.org or you may contact Robins POC at 478-327-8287 for additional information.

If you use the bus on a daily or almost daily basis, you may want to sign up for the Transportation Incentive Program (TIP). The Department of Transportation can provide you a free ride to work and back to your vehicle Monday-Friday and help reduce pollution and vehicle congestion. The normal cost to ride the bus is \$6.00 round trip.

All Air Force Active Duty, Air National Guard Active Duty, Air Force Reserve Active Duty, Air Force Civilian Employees, Air National Guard Civilian Employees, Air Force Reserve Civilian Employees, Air Force NAF Employees, Air National Guard NAF Employees, and Air Force Reserve NAF Employees are eligible for this program if you work on Robins AFB.



Contact the Transportation Incentive Program Manager at **478-926-7199** if you have any further questions or would like to sign up for the TIP Program.

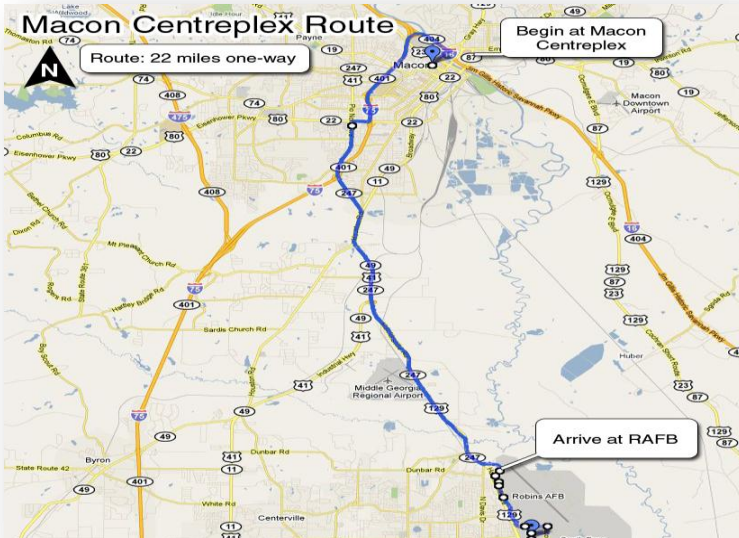
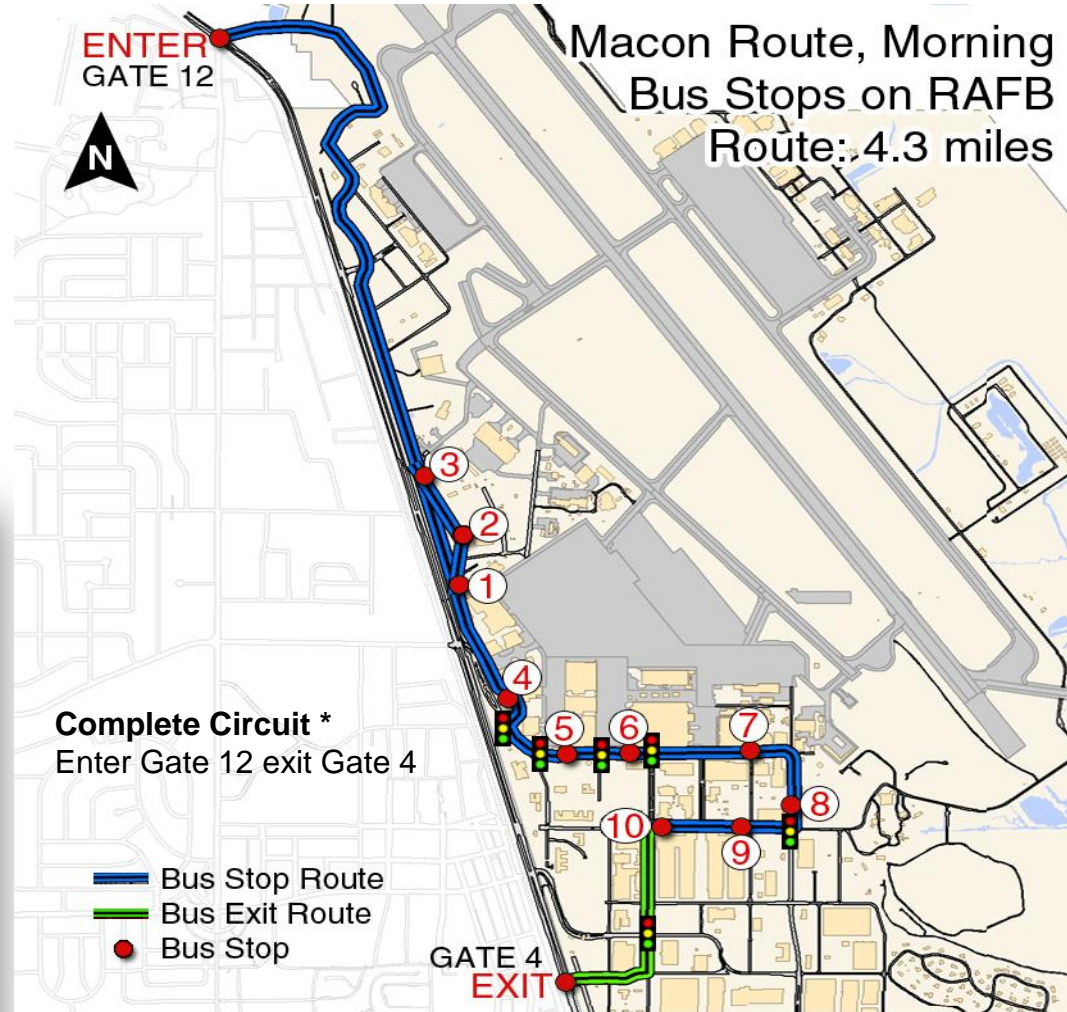
"Two Types of Class...First and None"



78TH AIR BASE WING

Morning Schedule

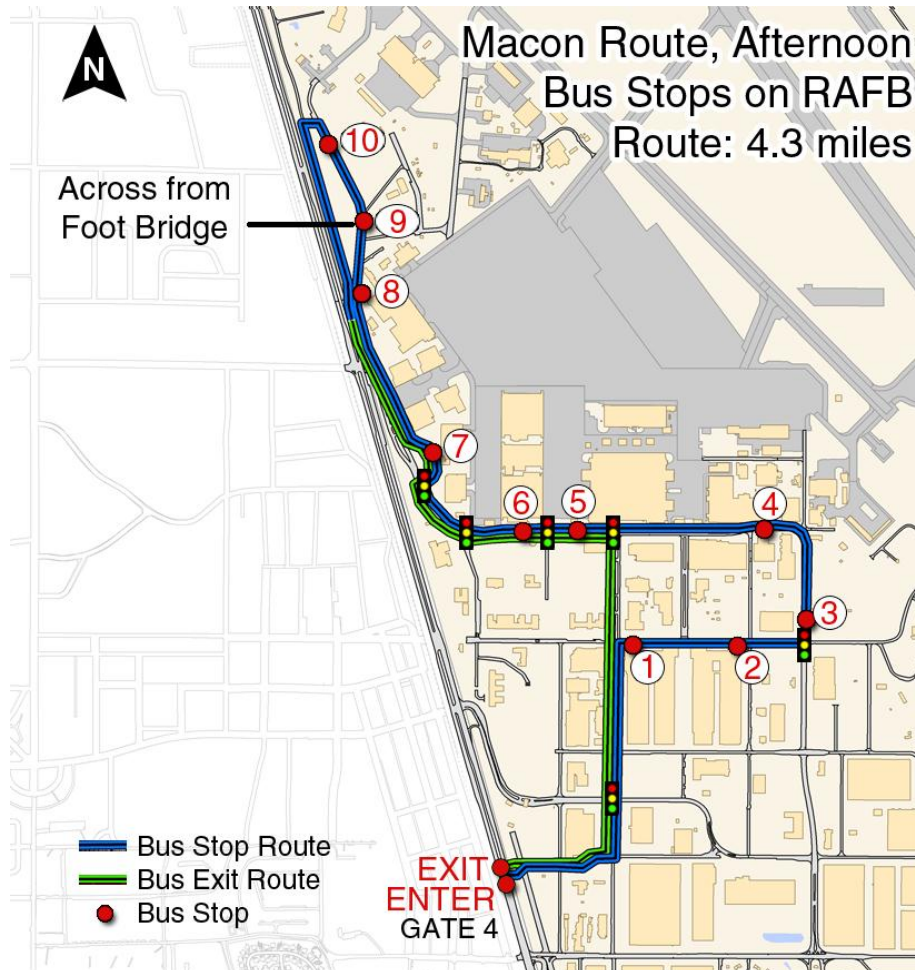
	Leave Macon Centreplex	Arrive Gate 12	Complete Circuit*
Depart from Macon: (1)	0445	0525	0545
Depart from Macon: (2)	0505	0545	0605
Depart from Macon: (3)	0525	0605	0625
Depart from Macon: (1)	0625	0705	0725
Depart from Macon: (2)	0645	0725	0745
Depart from Macon: (3)	0705	0745 <td 0805	
Depart from Macon: (1)	0805	0845	0905
Depart from Macon: (2)	0825	0905	0925



"Two Types of Class...First and None"



78TH AIR BASE WING



Afternoon Schedule

	Arrive at Gate 4	Complete Circuit*	Return to Macon Centreplex
Returns to RAFB: (1)	1400	1420	1500
Returns to RAFB: (2)	1420	1440	1520
Returns to RAFB: (3)	1440	1500	1540
Returns to RAFB: (1)	1540	1600	1640
Returns to RAFB: (2)	1600	1620	1700
Returns to RAFB: (3)	1620	1640	1720
Returns to RAFB: (1)	1720	1740	1820
Returns to RAFB: (2)	1740	1800	1840
Returns to RAFB: (3)	1800	1820	1900

Complete Circuit * - Enter Gate 4 and then exit Gate 4

"Two Types of Class...First and None"



78TH AIR BASE WING

Frequently Asked Questions

1Q. What is this program about?

1A. Macon Transit Authority (MTA) will be available to transport Robins AFB employees to and from base to reduce the amount of traffic coming on/off base and to help with gate congestion, traffic, and parking problem.

2Q. Where will the bus be picking people up from?

2A. Macon Transit Authority will start running a weekday bus route to Robins – “**Buses into Robins Daily,**” or **BIRD** – from the “**Macon Centreplex**”. Initially, there will be three buses picking up passengers in 20-minute intervals, beginning at 0445, Monday-Friday.

3Q. What is TIP?

3A. Transportation Incentive Program or TIP. It’s an incentive program that promotes carpooling/vanpooling as an alternative to driving your own car.

4Q. How much will it cost?

4A. It will cost the RAFB rider only \$6/day (round trip) for occasional rides. Employees that ride 80% of the time or more in a month may benefit even more if they enroll in the TIP. Employee would be eligible for 100% reimbursement. It takes approximately 30 days for the paperwork to be processed, but keep your receipts for every month so that you will be reimbursed. You can contact the **TIP Manager at 478-926-7199** if you have further questions or would like to sign up for the TIP Program

5Q. What if I ride **BIRD** and had an emergency and had to get back to my car?

5A. The “Wingman Concept”, your supervisor and/or your friends are always there to assist you.

6Q. What if I have a scheduled appointment, for example a Doctors Appointment?

6A. You may want to make other arrangements to get to RAFB on that day or you could reschedule your appointment. You have the flexibility to ride **BIRD** as your schedule permits.

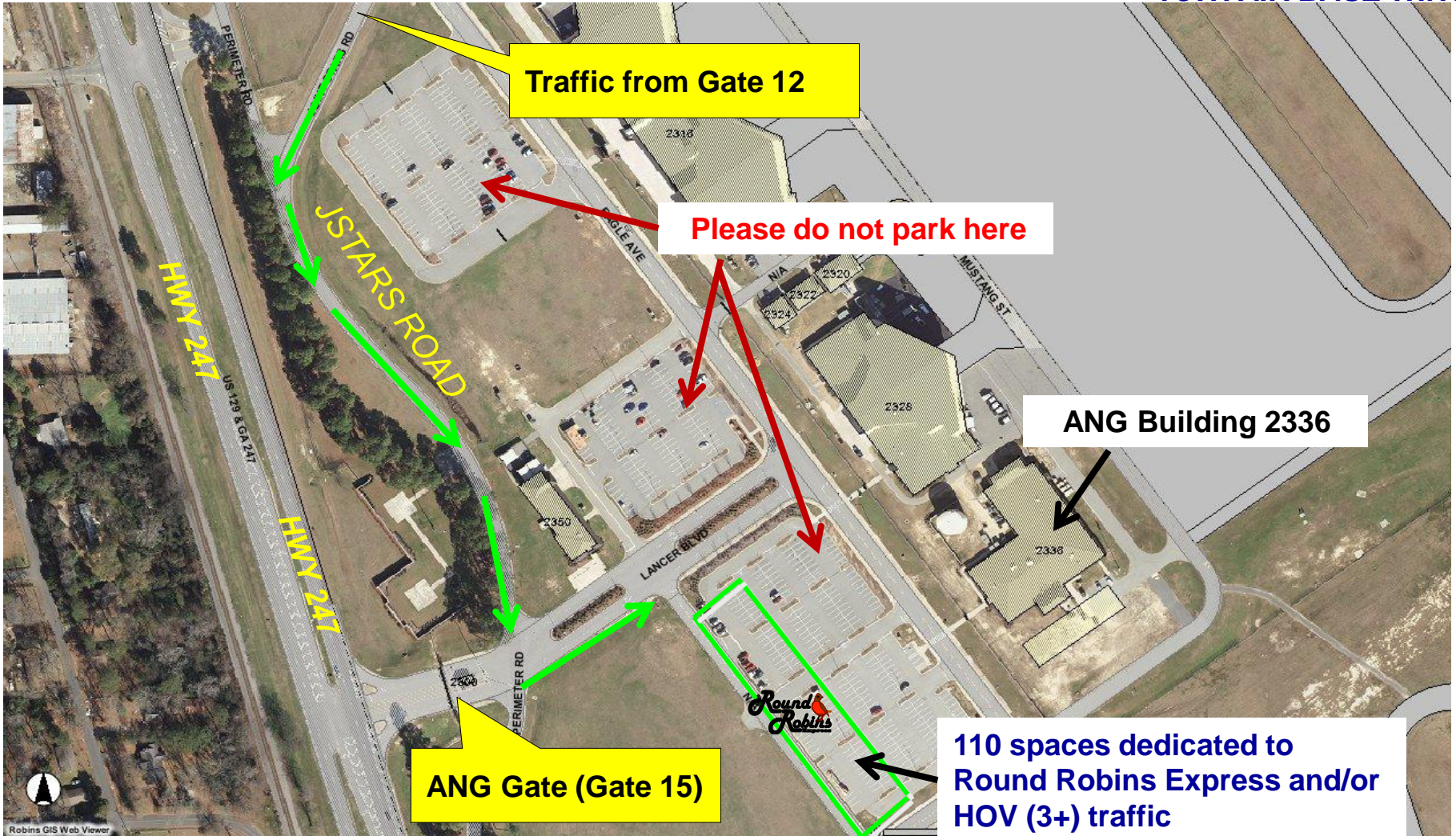
“Two Types of Class...First and None”



Round Robins Express 110 Spaces



78TH AIR BASE WING



"Two Types of Class...First and None"



Round Robins Express



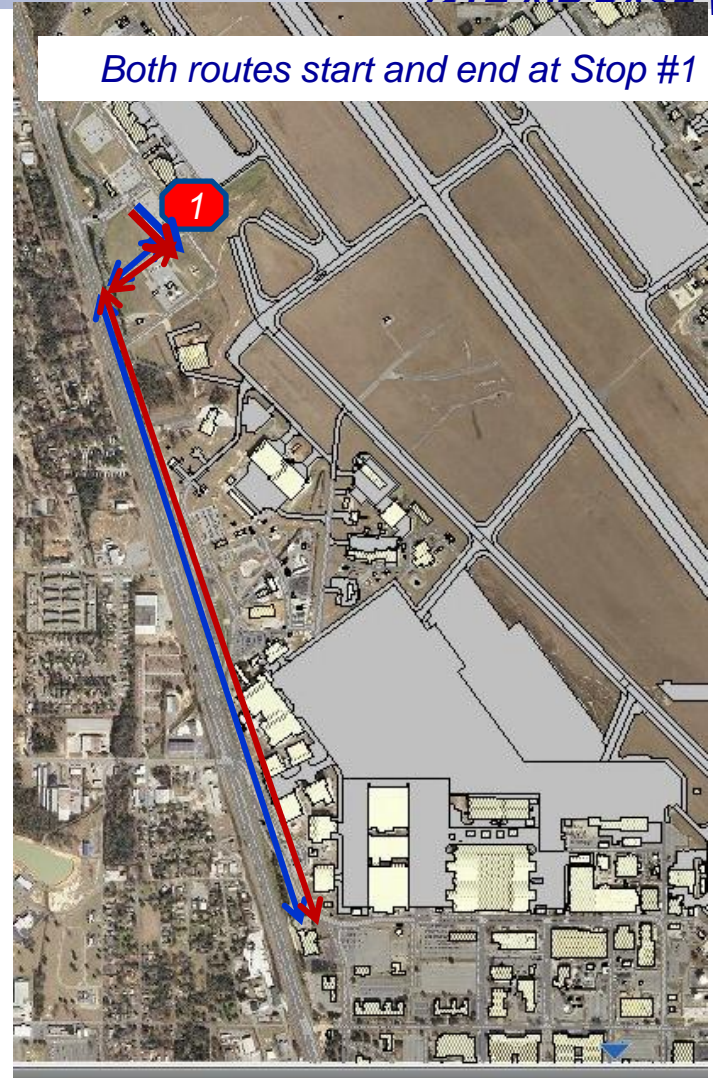
78TH AIR BASE WING



has 110 reserved parking spaces West of the ANG Building 2336 for anyone desiring to park here and then catch a ride on Round Robins Express, avoiding congested parking areas. Vehicles entering from the dedicated HOV Gate (Gate 12) and the ANG Gate 15 would have easy access to this parking lot. There will be 4 buses and 2 different routes (**Blue (A)** and **Red (B)**) available with the capacity of 10 complete loops per hour.

Round Robins Express Shuttle hours are from 0600-0900 and 1300-1700. This is a **“free”** service available to any employee. As you can see from the route and schedule in the next few slides, you will have ample opportunity to catch Round Robins Express.

Continuation on next slide



"Two Types of Class...First and None"

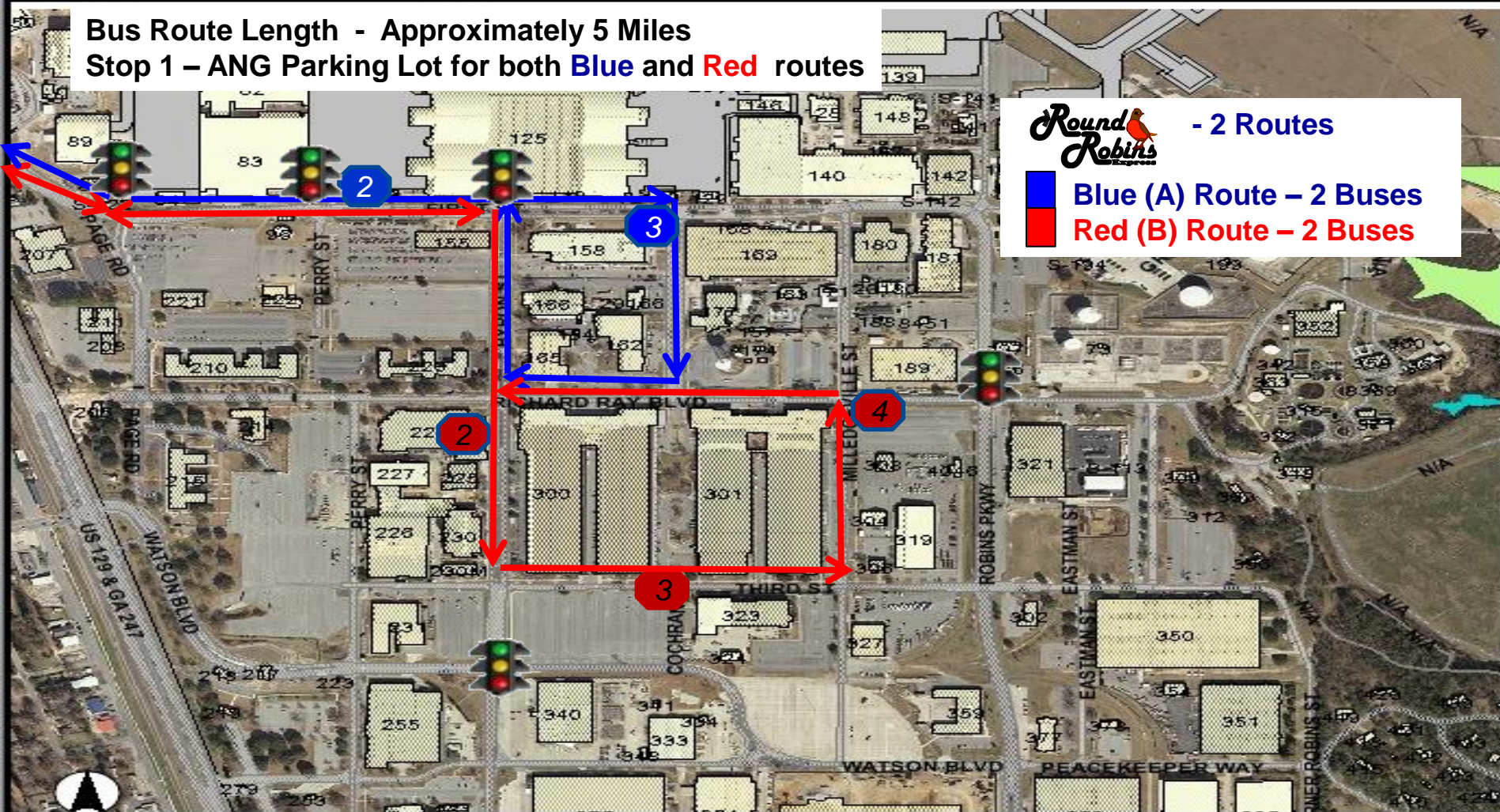


Round Robins Express



78TH AIR BASE WING

Bus Route Length - Approximately 5 Miles
Stop 1 - ANG Parking Lot for both Blue and Red routes



"Two Types of Class...First and None"



Round Robins Express



78TH AIR BASE WING

BLUE ROUTE (A)	Morning Shuttle hours: 0600 – 0900
Leaves ANG Parking Lot (Stop 1)	0600, 0610, 0617, 0627, 0634, 0644, 0651, 0703, 0708, 0720, 0725, 0737, 0742, 0754, 0759, 0811, 0816, 0828, 0833, 0845, 0850, 0902
~ 5 minute travel to next stop	
Arrives Building 125 Foot bridge (Stop 2)	0605, 0615, 0622, 0632, 0639, 0649, 0656, 0708, 0713, 0725, 0730, 0742, 0745, 0759, 0804, 0816, 0821, 0833, 0838, 0850, 0855
~ 3 minute travel to next stop	
Arrives at intersection of Building 158/140/169 (Stop 3)	0608, 0618, 0625, 0635, 0642, 0652, 0659, 0711, 0716, 0728, 0733, 0745, 0748, 0802, 0807, 0819, 0824, 0836, 0841, 0853, 0858

BLUE ROUTE (A)	Afternoon Shuttle hours: 1300-1700
Arrives at intersection of Building 158/140/169 (Stop 3)	1300, 1310, 1317, 1327, 1334, 1344, 1351, 1403, 1408, 1420, 1425, 1437, 1442, 1454, 1459, 1511, 1516, 1528, 1533, 1545, 1550, 1602, 1607, 1619, 1624, 1636, 1641, 1653, 1658
~ 3 minute travel to next stop	
Arrives Building 125 Foot bridge (Stop 2)	1303, 1313, 1320, 1330, 1337, 1347, 1354, 1406, 1411, 1423, 1428, 1440, 1445, 1457, 1502, 1514, 1519, 1531, 1548, 1536, 1553, 1605, 1610, 1621, 1627, 1639, 1644, 1656, 1701
~ 5 minute travel to next stop	
Arrives ANG Parking Lot (Stop 1)	1308, 1318, 1325, 1335, 1342, 1352, 1359, 1411, 1416, 1428, 1433, 1445, 1450, 1502, 1507, 1519, 1524, 1536, 1541, 1553, 1558, 1610, 1615, 1626, 1632, 1644, 1649, 1701, 1706

"Two Types of Class...First and None"



Round Robins Express



78TH AIR BASE WING

RED ROUTE (B)	Morning Shuttle hours: 0600-0900
Leaves ANG Parking Lot (Stop 1)	0600, 0610, 0622, 0632, 0644, 0654, 0706, 0716, 0728, 0738, 0750, 0800, 0812, 0822, 0834, 0844, 0856
~ 6 minute travel to next stop	
Arrives Building 227/228 (Stop 2)	0606, 0616, 0628, 0638, 0650, 0700, 0712, 0722, 0734, 0744, 0756, 0806, 0818, 0828, 0840, 0850, 0902
~ 3 minute travel to next stop	
Arrives at intersection of Building 300/301/323 (Stop 3)	0609, 0619, 0631, 0641, 0653, 0703, 0715, 0725, 0737, 0747, 0759, 0809, 0821, 0831, 0843, 0853, 0905
~ 3 minute travel to next stop	
Arrives at intersection of Building 301/308/189 (Stop 4)	0612, 0622, 0634, 0644, 0656, 0706, 0718, 0728, 0740, 0750, 0802, 0812, 0824, 0834, 0846, 0856, 0908

RED ROUTE (B)	Afternoon Shuttle hours: 1300-1700
Arrives at intersection of Building 301/308/189 (Stop 4)	1300, 1310, 1322, 1332, 1344, 1354, 1406, 1416, 1428, 1438, 1500, 1450, 1512, 1522, 1534, 1544, 1556, 1606, 1618, 1628, 1640, 1650
~ 3 minute travel to next stop	
Arrives at intersection of Building 300/301/323 (Stop 3)	1303, 1313, 1325, 1335, 1347, 1357, 1409, 1419, 1431, 1441, 1453, 1503, 1515, 1525, 1537, 1547, 1559, 1609, 1621, 1631, 1643, 1653
~ 3 minute travel to next stop	
Arrives Building 227/228 (Stop 2)	1306, 1316, 1328, 1338, 1350, 1400, 1412, 1422, 1434, 1444, 1456, 1506, 1518, 1528, 1540, 1550, 1602, 1612, 1634, 1624, 1646, 1656
~ 6 minute travel to next stop	
Arrives ANG Parking Lot (Stop 1)	1312, 1322, 1334, 1344, 1356, 1406, 1418, 1428, 1440, 1450, 1502, 1512, 1524, 1534, 1546, 1556, 1608, 1618, 1630, 1640, 1652, 1702

"Two Types of Class...First and None"



Round Robins Express



78TH AIR BASE WING

FREQUENTLY ASKED QUESTIONS

1Q. What is Round Robins Express?

1A. It's a shuttle service to provide you a ride from designated parking areas to specific stops on the north end of base (402 MXW/bldg 300/301)

2Q. Will this cost me anything?

2A. There is no fee for using this service

3Q. When will this program start?

3A. The shuttle service will start **Monday, 29 November 2010**, there will be a total of 4 busses, two routes from 0600-0900 then again at 1300-1700 Monday-Friday, except holidays and family days.

4Q. What if I ride Round Robins Express and had an emergency and had to get back to my car?

4A. The "Wingman Concept", your supervisor and/or your friends are always there to assist you.



"Two Types of Class...First and None"



How you can help



78TH AIR BASE WING

➤ **Use the available mass transportation!**

- Even one day can make a difference

➤ **Car pool!**

- Ease congestion, use HOV gate, save gas and reduce your environmental footprint

➤ **Cooperation with community partners**

- Encourage use of Robins transportation alternatives
- Develop new, innovative ways to help ease the problem

➤ **Spread the word!**

- Encourage others to take part

"Two Types of Class...First and None"